



Long Beach City College 2012 ARCC Data

Report to the LBCCD Board of Trustees

Eva Bagg
Associate Dean, Institutional Effectiveness

July 24, 2012





ARCC Background

- Annual evaluation of community college performance in meeting statewide educational outcome priorities as required by AB1417
- Performance framework and indicators (seven) developed by the Research and Planning Group/Center for Student Success
- 2007 report was pilot year; 2008 data marked the first year; current report (2012) is the fifth year



ARCC Performance Indicators

DEGREE, CERTIFICATE, TRANSFER	WORKFORCE DEVELOPMENT	BASIC SKILLS, ESL, ENHANCED NON-CREDIT
<ol style="list-style-type: none">1. Student Progress and Achievement Rate2. Percent of Students Who Earned at Least 30 Units3. Fall to Fall Persistence Rate	<ol style="list-style-type: none">4. Vocational Course Completion Rate	<ol style="list-style-type: none">5. Basic Skills Course Completion Rate6. Basic Skills Improvement7. ESL Improvement



(1) Student Progress and Achievement Rate

(Denominator)

- Out of an initial group of first-time students who attempted 12 or more units in any degree/transfer/advanced vocational course,

(Numerator)

- Those who completed at least one of the following:
 - Transferred to 4-year
 - Earned AA/AS
 - Earned Certificate (18+ units)
 - “Transfer Directed” status (complete both transfer-level math & English)
 - “Transfer Prepared” status (complete 60 UC/CSU transferable units w/2.0 GPA)

within 6 years, anywhere in CCC system.



(1) Student Progress and Achievement Rate

COHORT YEAR				
03-04	04-05	05-06	PEER GRP AVG	STATE AVG
45.8%	44.5%	45.0%	49.9%	52.5%

Note: There were 2449 students in the 2005-2006 cohort, and 1103 achieved one or more of the outcomes by the end of 2010-2011.

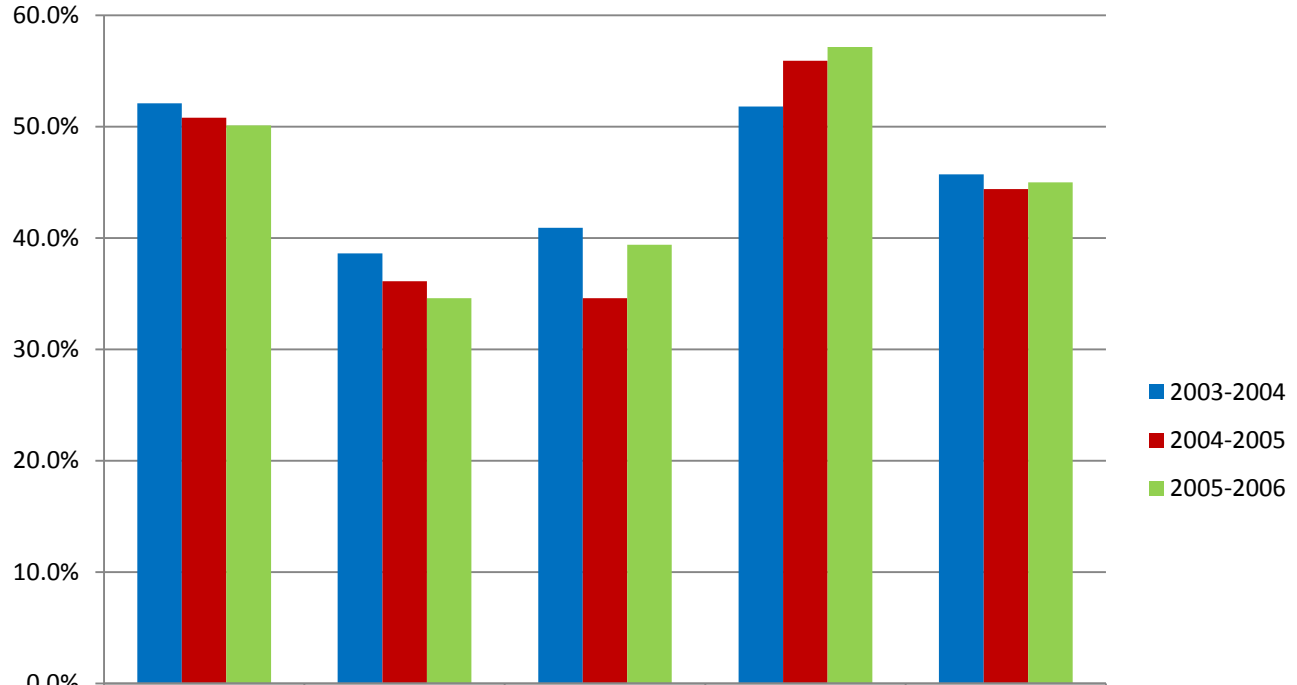
** In an academic year we normally enroll about 8000 first-time students. This data shows that only about 27% demonstrate an intent to complete.





(1) Student Progress and Achievement Rate

Student Progress and Achievement Rate by Ethnicity

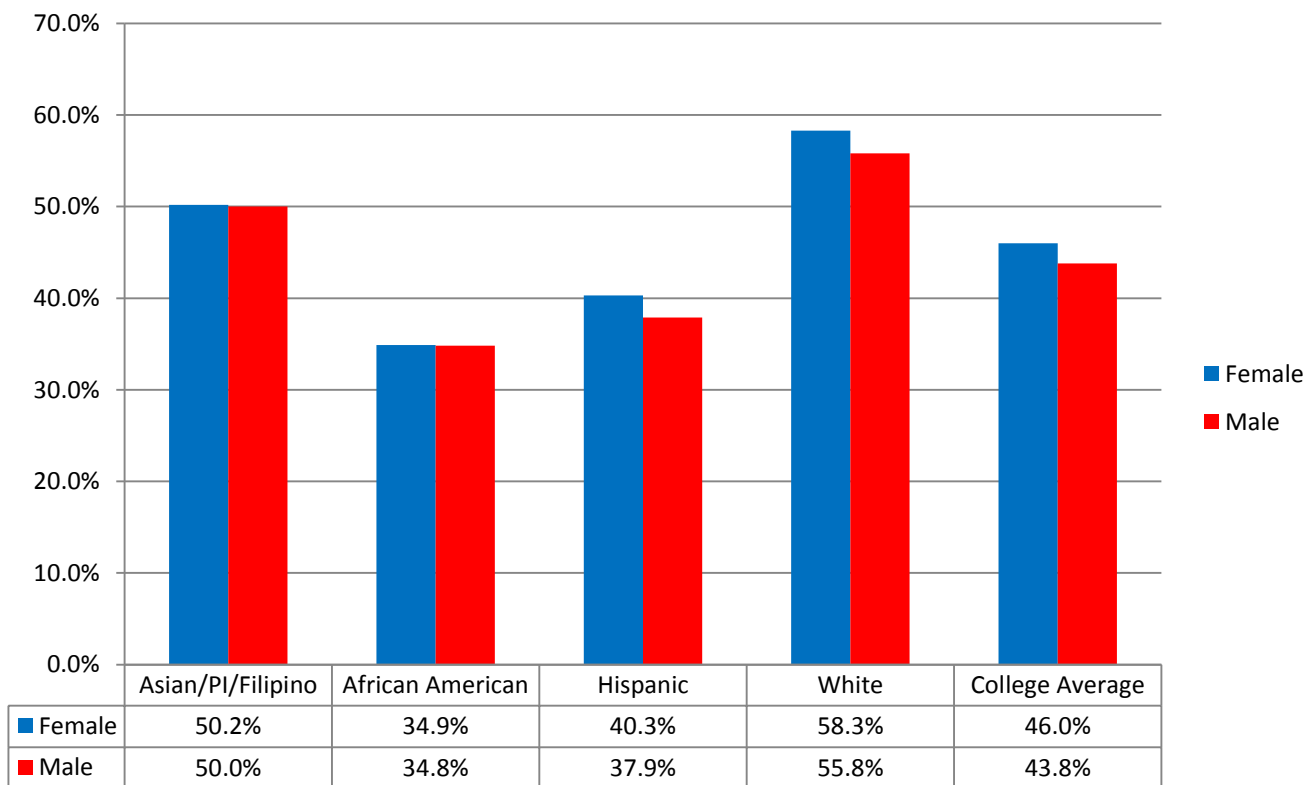


	Asian/PI/Filipino	African American	Hispanic	White	College Average
■ 2003-2004	52.1%	38.6%	40.9%	51.8%	45.7%
■ 2004-2005	50.8%	36.1%	34.6%	55.9%	44.4%
■ 2005-2006	50.1%	34.6%	39.4%	57.1%	45.0%



(1) Student Progress and Achievement Rate by Ethnicity and Gender

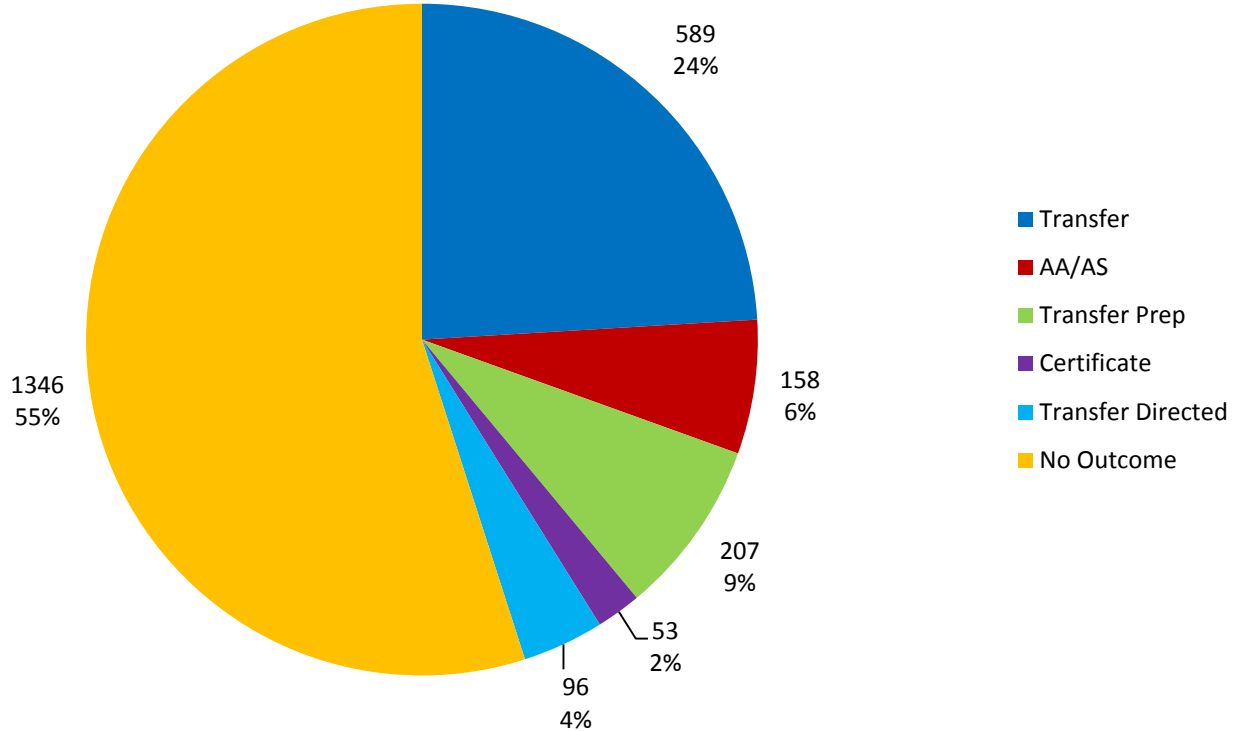
Student Progress and Achievement Rate by Ethnicity and Gender 2005-2006 Cohort





(1) Student Progress and Achievement Rate by Outcome Type

Student Progress and Achievement by Outcome Type, 2005-2006 Cohort





(1) Student Progress and Achievement Rate by Outcome Type and Ethnicity

Outcome Type	Count of students	Asian_PI_Fil		African Amer		Hispanic		White		All
			%		%		%		%	
Transfer	589	155	28.0%	48	16.8%	169	18.3%	146	36.0%	24.1%
AA/AS	158	35	6.3%	12	4.2%	68	7.4%	29	7.1%	6.5%
TR Prep	207	53	9.6%	23	8.0%	68	7.4%	34	8.4%	8.5%
Certificate	53	10	1.8%	8	2.8%	23	2.5%	8	2.0%	2.2%
TR Direct	96	24	4.3%	8	2.8%	36	3.9%	15	3.7%	3.9%
No Outcome	1346	276	49.9%	187	65.4%	561	60.6%	174	42.9%	55.0%
Total Students in Cohort	2449	553	100.0%	286	100.0%	925	100.0%	406	100.0%	100.0%
Achieved some outcome	1103	277	50.1%	99	34.6%	364	39.4%	232	57.1%	45.0%



(1) Student Progress and Achievement Rate by Outcome Type and Ethnicity

Outcome Type	Count of students	Asian_PI_Fil		African Amer		Hispanic		White		All
			%		%		%		%	
Transfer	589	155	28.0%	48	16.8%	169	18.3%	146	36.0%	24.1%
AA/AS	158	35	6.3%	12	4.2%	68	7.4%	29	7.1%	6.5%
TR Prep	207	53	9.6%	23	8.0%	68	7.4%	34	8.4%	8.5%
Certificate	53	10	1.8%	8	2.8%	23	2.5%	8	2.0%	2.2%
TR Direct	96	24	4.3%	8	2.8%	36	3.9%	15	3.7%	3.9%
No Outcome	1346	276	49.9%	187	65.4%	561	60.6%	174	42.9%	55.0%
Total Students in Cohort	2449	553	100.0%	286	100.0%	925	100.0%	406	100.0%	100.0%
Achieved some outcome	1103	277	50.1%	99	34.6%	364	39.4%	232	57.1%	45.0%



(1) Student Progress and Achievement Rate by Outcome Type and Ethnicity

Outcome Type	Count of students	Asian_PI_Fil		African Amer		Hispanic		White		All
			%		%		%		%	
Transfer	589	155	28.0%	48	16.8%	169	18.3%	146	36.0%	24.1%
AA/AS	158	35	6.3%	12	4.2%	68	7.4%	29	7.1%	6.5%
TR Prep	207	53	9.6%	23	8.0%	68	7.4%	34	8.4%	8.5%
Certificate	53	10	1.8%	8	2.8%	23	2.5%	8	2.0%	2.2%
TR Direct	96	24	4.3%	8	2.8%	36	3.9%	15	3.7%	3.9%
No Outcome	1346	276	49.9%	187	65.4%	561	60.6%	174	42.9%	55.0%
Total Students in Cohort	2449	553	100.0%	286	100.0%	925	100.0%	406	100.0%	100.0%
Achieved some outcome	1103	277	50.1%	99	34.6%	364	39.4%	232	57.1%	45.0%



(1) Student Progress and Achievement Rate by Outcome Type and Ethnicity

Outcome Type	Count of students	Asian_PI_Fil		African Amer		Hispanic		White		All
			%		%		%		%	
Transfer	589	155	28.0%	48	16.8%	169	18.3%	146	36.0%	24.1%
AA/AS	158	35	6.3%	12	4.2%	68	7.4%	29	7.1%	6.5%
TR Prep	207	53	9.6%	23	8.0%	68	7.4%	34	8.4%	8.5%
Certificate	53	10	1.8%	8	2.8%	23	2.5%	8	2.0%	2.2%
TR Direct	96	24	4.3%	8	2.8%	36	3.9%	15	3.7%	3.9%
No Outcome	1346	276	49.9%	187	65.4%	561	60.6%	174	42.9%	55.0%
Total Students in Cohort	2449	553	100.0%	286	100.0%	925	100.0%	406	100.0%	100.0%
Achieved some outcome	1103	277	50.1%	99	34.6%	364	39.4%	232	57.1%	45.0%



(2) Percent of Students Who Earned At Least 30 Units

(Denominator)

- Out of the initial group of first-time students who earned a minimum of 12 units *and* attempted at least one degree/certificate/transfer course,

(Numerator)

- Those who earned 30 units or more at LBCC or anywhere in the CCC system within 6 years of entry.

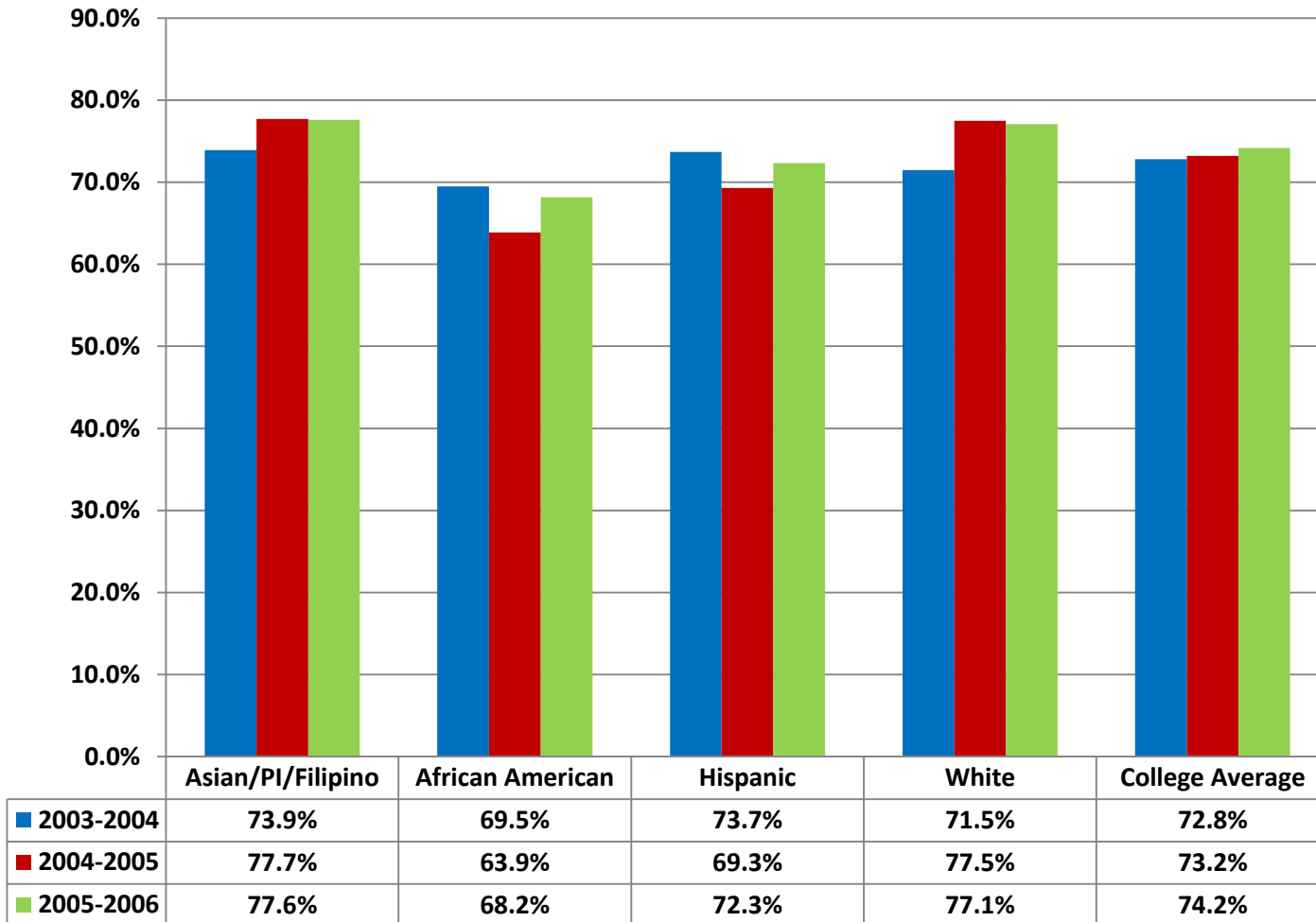
(2) Percent of Students Who Earned At Least 30 Units

COHORT YEAR				
03-04	04-05	05-06	PEER GRP AVG	STATE AVG
72.9%	73.4%	74.2%	76.0%	71.3%

Note: There were 2449 students in the 2005-2006 cohort, and 1817 earned 30 units or more by the end of 2010-2011.

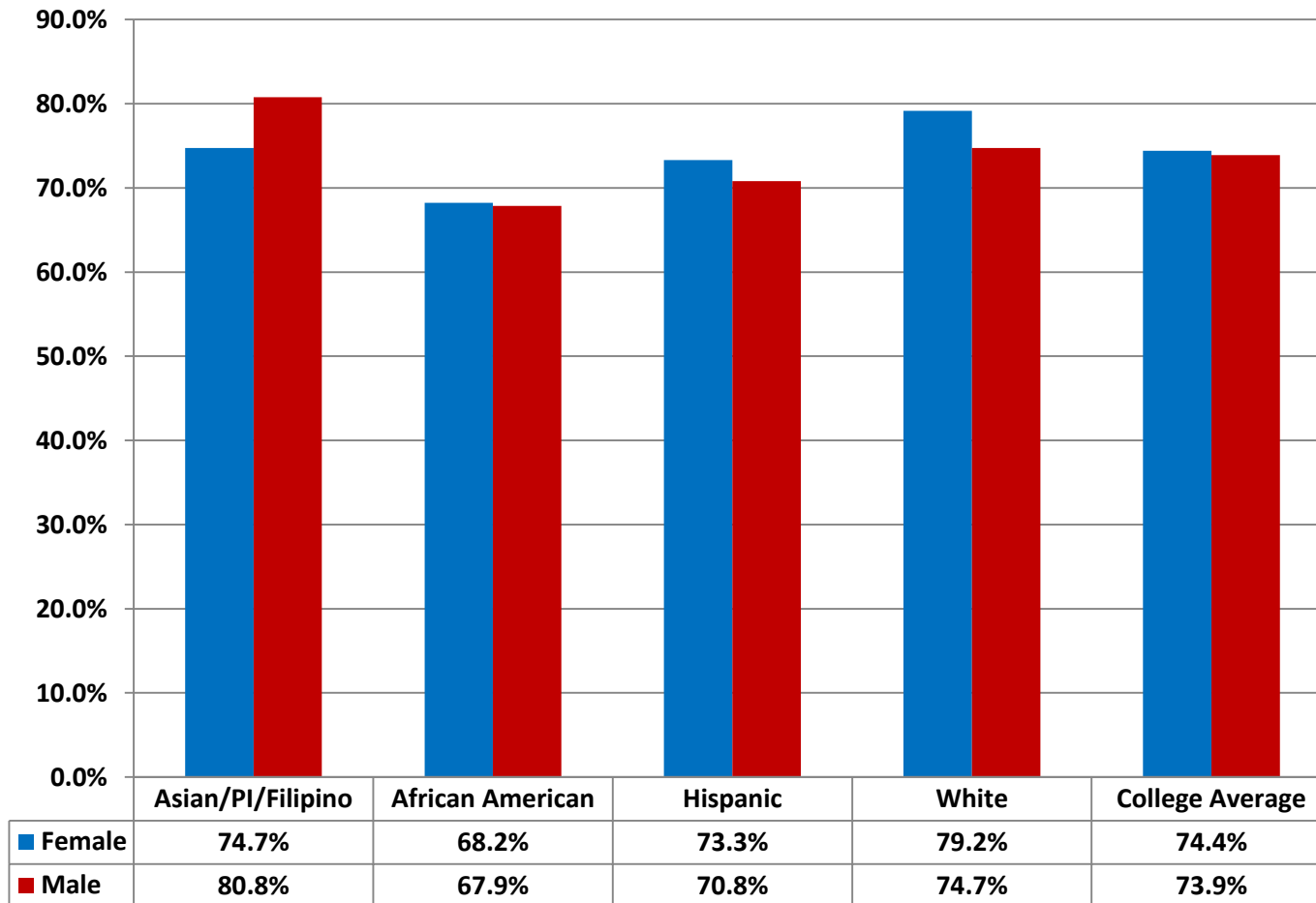
(2) Percent of Students Who Earned At Least 30 Units

Students Who Earned At Least 30 Units by Ethnicity



(2) Percent of Students Who Earned At Least 30 Units

Students Who Earned At Least 30 Units by Ethnicity and Gender
2005-2006 Cohort





(3) Fall to Fall Persistence Rate

(Denominator)

- Out of the initial group of first-time students who earned a minimum of six units in the first fall term,

(Numerator)

- Those who enrolled in any California Community College in the subsequent fall semester.



(3) Fall to Fall Persistence Rate

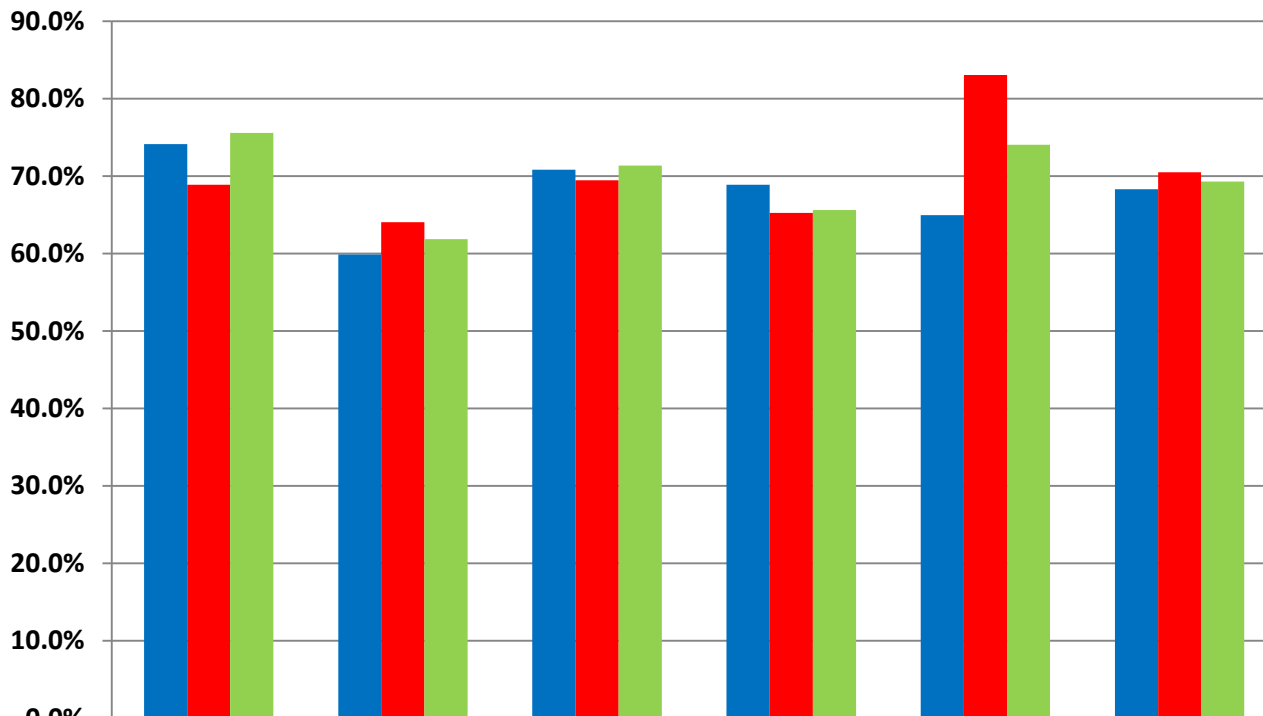
COHORT TERM AND SUBSEQUENT FALL TERM				
Fall 07 to Fall 08	Fall 08 to Fall 09	Fall 09 to Fall 10	PEER GRP AVG	STATE AVG
68.3%	70.5%	68.6%	71.0%	68.3%

Note: There were 3495 students in the fall 2009 cohort, 2422 persisted to the following fall term.

(3) Fall to Fall Persistence Rate



Fall to Fall Persistence by Ethnicity

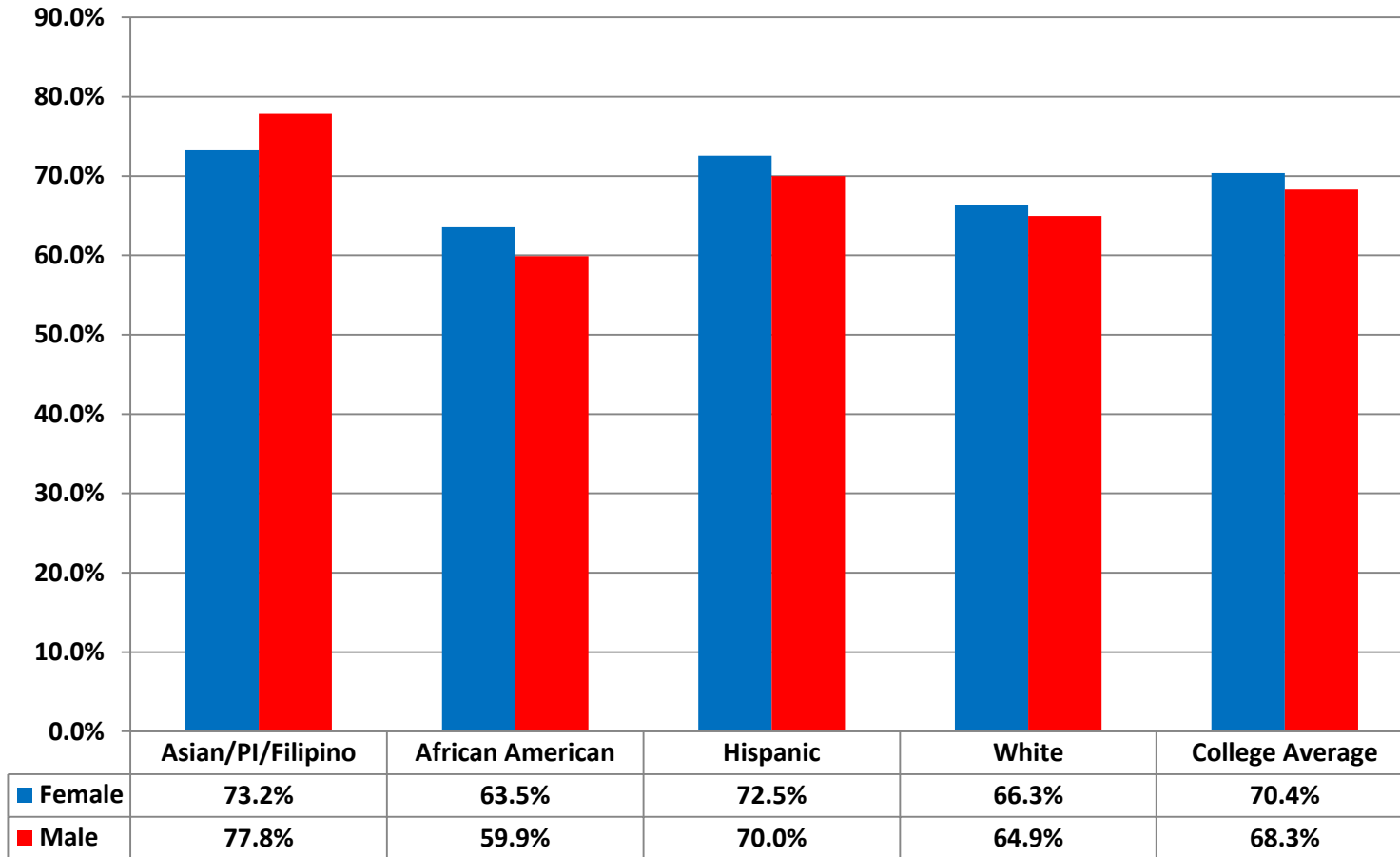


	Asian/PI/Filipino	African America	Hispanic	White	Other	College Average
Fall 2007 to Fall 2008	74.1%	59.9%	70.8%	68.9%	65.0%	68.3%
Fall 2008 to Fall 2009	68.9%	64.0%	69.5%	65.3%	83.1%	70.5%
Fall 2009 to Fall 2010	75.6%	61.9%	71.4%	65.6%	74.1%	69.3%

(3) Fall to Fall Persistence Rate



Persistence By Ethnicity and Gender
Fall 2009 to Fall 2010





(4) Vocational Course Completion Rate

(Denominator)

- Out of all credit vocational course enrollments with an A, B, C, D, F, P, NP, I, W, DR

(Numerator)

- The number of A, B, C, or P grades earned.

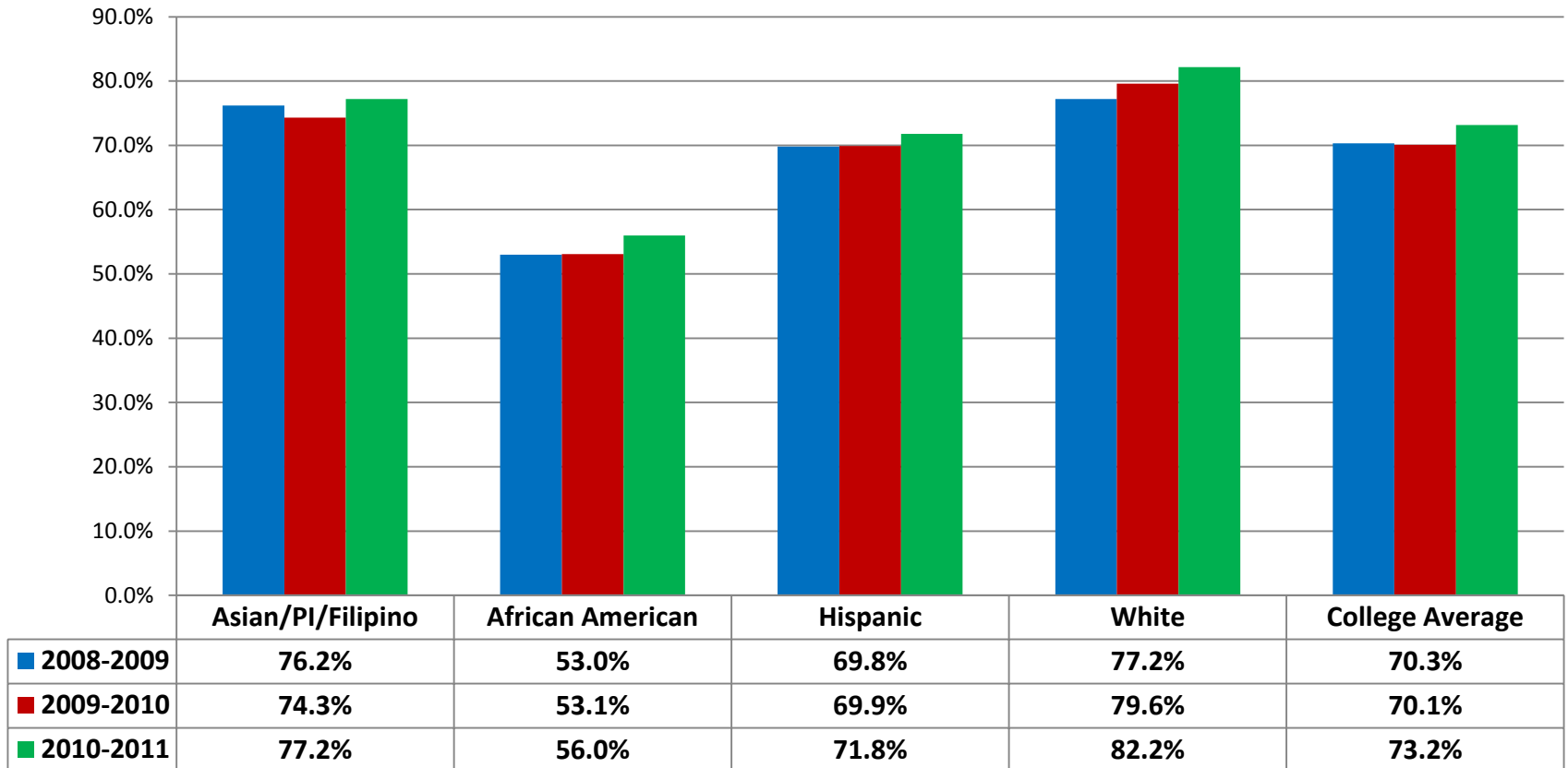
(4) Vocational Course Completion Rate



ACADEMIC YEAR				
2008-2009	2009-2010	2010-2011	PEER GRP AVG	STATE AVG
70.3%	70.1%	73.2%	75.8%	74.9%

(4) Vocational Course Completion Rate by Ethnicity

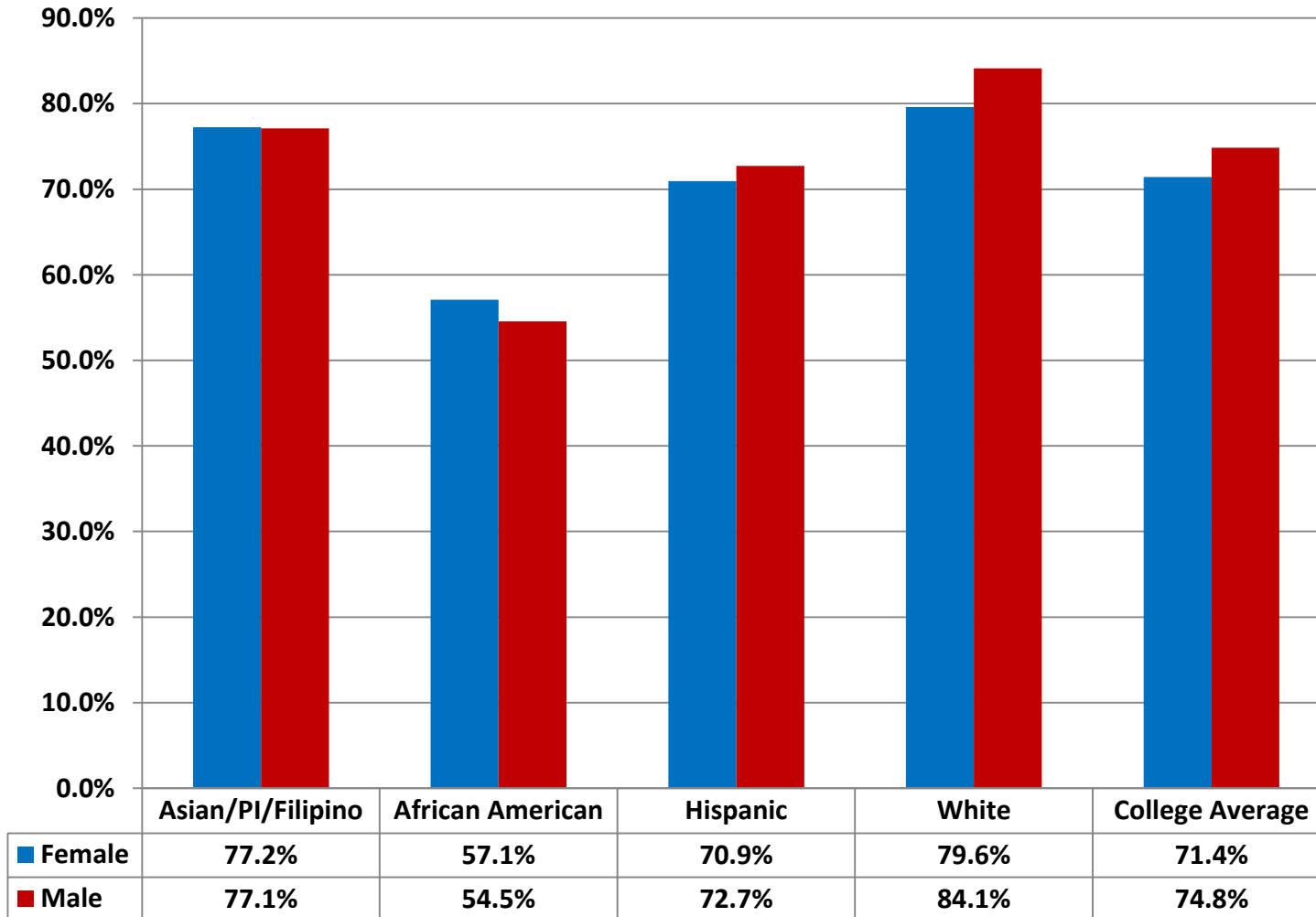
Annual Successful Course Completion Rate for Vocational Courses



(4) Vocational Course Completion Rate by Ethnicity and Gender



2010-2011 Vocational Skills Course Completion Rate





(5) Basic Skills Course Completion Rate

(Denominator)

- Out of all credit basic skills course enrollments (800 level) with an A, B, C, D, F, P, NP, I, W or DR

(Numerator)

- The number of A, B, C, or P grades earned

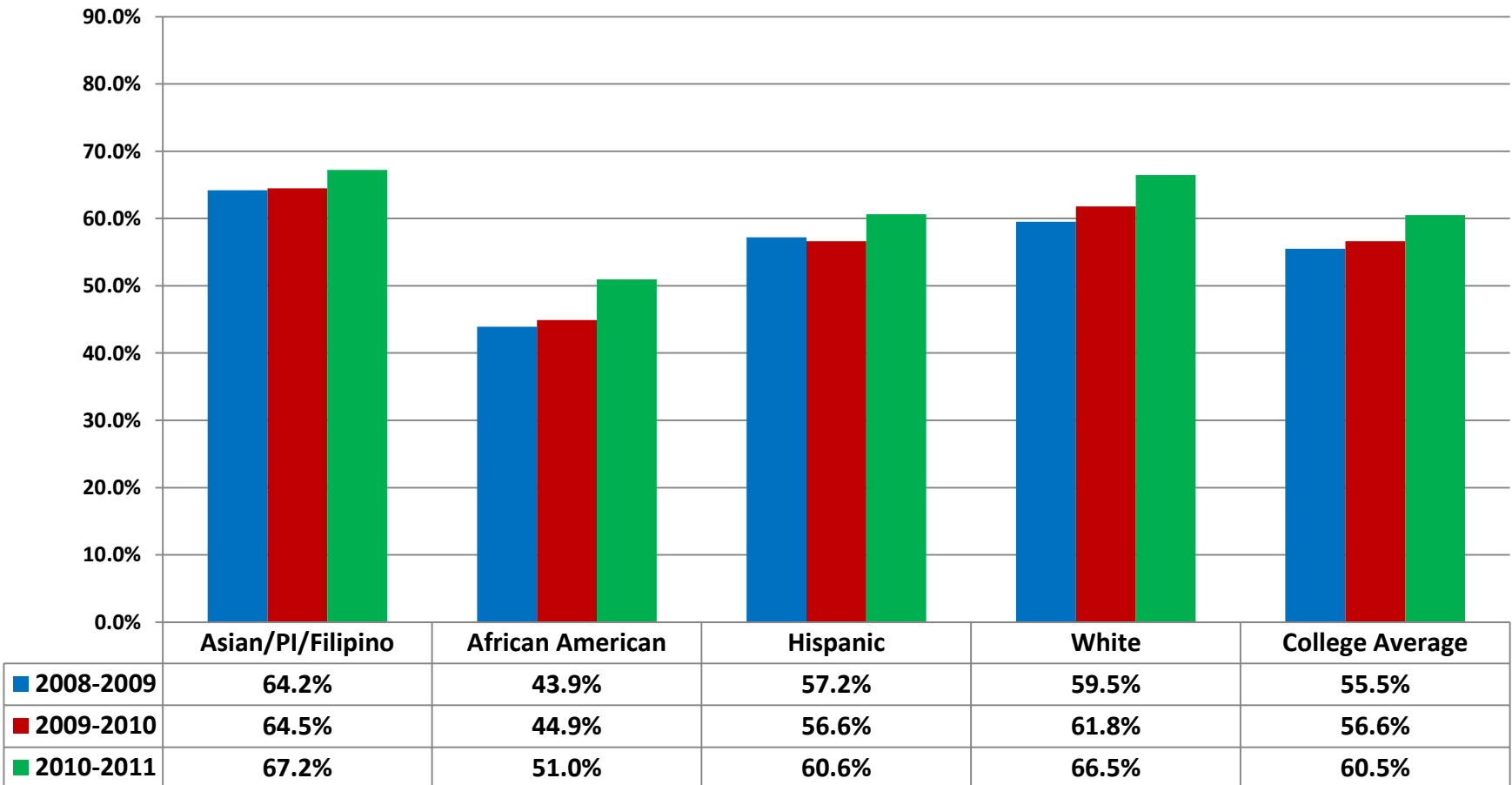


(5) Credit Basic Skills Course Completion Rate

ACADEMIC YEAR				
2008-2009	2009-2010	2010-2011	PEER GRP AVG	STATE AVG
55.5%	55.6%	60.5%	60.7%	61.7%

(5) Basic Skills Course Completion Rate by Ethnicity

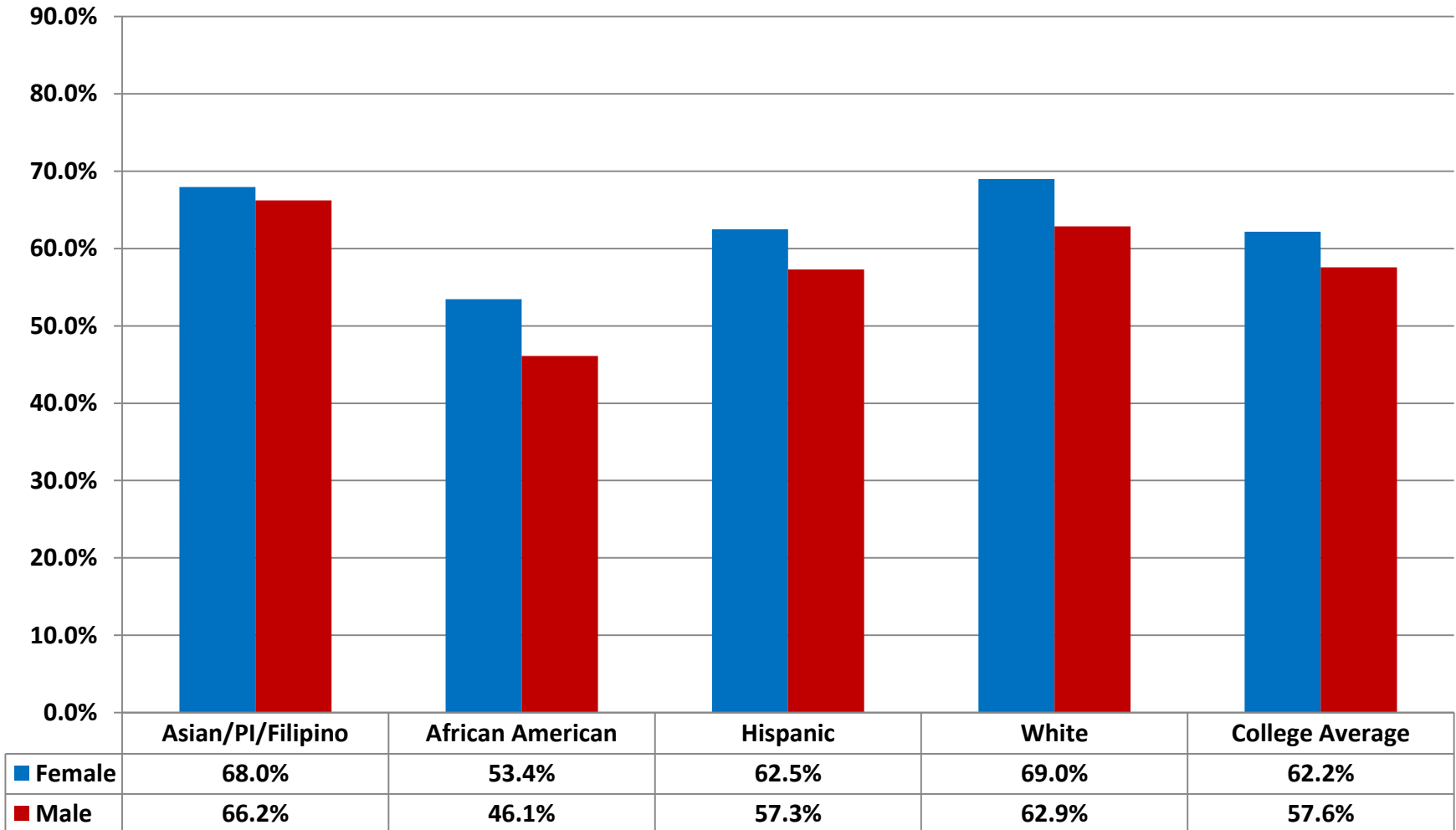
Annual Successful Course Completion Rate for Credit Basic Skills Courses





(5) Basic Skills Course Completion Rate by Ethnicity and Gender

2010-2011 Basic Skills Course Completion Rate





(6 & 7) Basic Skills and ESL Improvement Rate

(Denominator)

- Out of students who enrolled in credit English and/or math (basic skills) or ESL course who:
 - Began 2 or more levels below transfer level
 - Successfully completed the initial course (C/CR or better)

(Numerator)

- Those who successfully completed a higher-level course in the same discipline within 3 years

Note: Students are only counted once in the rate, regardless of how many times they improved through the sequence

(6 & 7) Basic Skills and ESL Improvement Rate



	COHORT YEAR				
	2006-2007	2007-2008	2008-2009	PEER GRP AVG	STATE AVG
Basic Skills	64.4%	64.2%	66.7%	58.4%	56.2%
ESL	46.9%	51.8%	52.9%	57.9%	50.8%

Note: Currently, the Chancellor's Office does not make available to colleges data on these improvement rates disaggregated by gender or ethnicity.



Highlights from Student Data

- Less than 30 percent of first-time freshmen demonstrate clear educational intent.
- Only 45 percent of cohort complete any of the five progress and achievement outcomes within 6 years.
- Most pronounced gains in this year's report appear for basic skills completion rates and ESL and basic skills improvement rates.



Highlights from Student Data

- Performance gaps in achievement persist among ethnic groups.
- Vocational course completions continue to show marked gaps among ethnic groups.



Discussion